

Citizen Participation in Improving a Community

Brenda Ellsworth, REALTOR®
Mayor of City of Ash Grove, MO

New Partners for Smart Growth Conference
Denver, Colorado
January 27, 2006

Ash Grove, Missouri



Ash Grove, Missouri

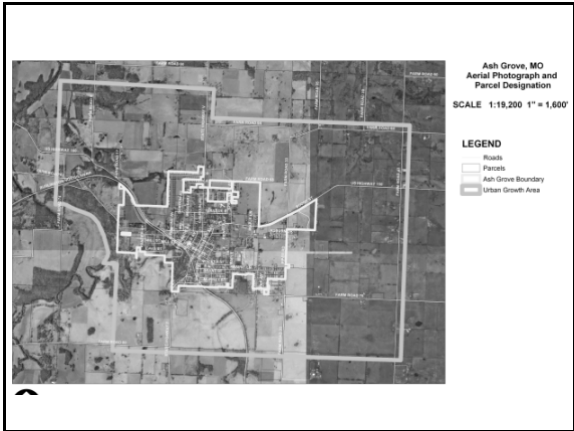
- Population 1,430
- 20 miles from Springfield











Citizen Involvement

- **Historic preservation**
- **Make a Difference Day**
- **Adopted a school in Louisiana**





Louisiana: Share Your Blessings











Growth Issues in Ash Grove

- Springfield region is growing and sprawling toward Ash Grove
- Too many vacancies on Main Street
- New commercial and residential development has not matched the character of the town

NAR's Smart Growth Program

- Smart Growth presentation to Greater Springfield Board of REALTORS®
- NAR staff invited to meet with town leaders and citizens - May 2004
- Workshop (charrette) in Nov. 2004 funded by NAR, local REALTOR® board, and City of Ash Grove

Community Planning Workshop

- Conducted by Nelessen Associates
- Assisted by volunteers from Missouri State University planning program



Community Planning Workshop

- Day 1: Meetings with Mayor, council, planners, county officials and city engineers



Community Planning Workshop

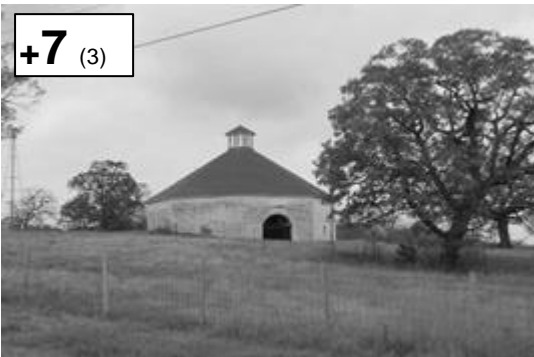
Day 2: Planning Charrette - day and evening sessions; 120 citizens participated

- Charrette included:
 - Visual Preference Survey
 - Written questionnaire
 - Hands-on planning exercises

Visual Preference Survey

T-1 Preservation Areas: Historic site

+7 (3)



Line 23

T-3 Suburban Commercial: Arterial road

-2 (4)



Line 45

T-4 General Neighborhood: Single family housing

+6 (4)



Line 69

T-6 City Core: Commercial street

-2 (4)



Line 64

T-6 City Core: Commercial use

-3 (5)



Hands-On Planning Exercise



T 2 Rural Reserve - Farms

Recommendations for Code

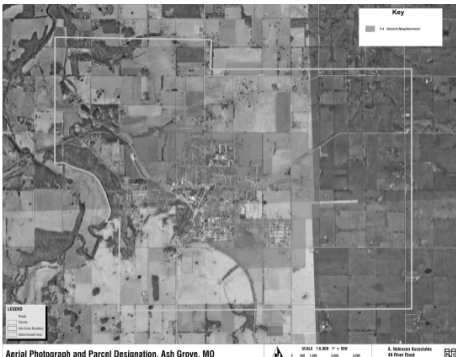
90 to 110 units



Area recommended for Rural Reserve T 2

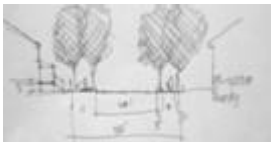
T 4 General Neighborhood **672 to 1630 units**

Recommendations for Code



T 5 Area surrounding the Town Center

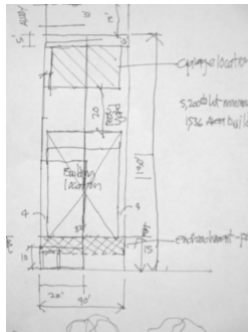
Recommendations for Code



Street section ST 50:28



Image



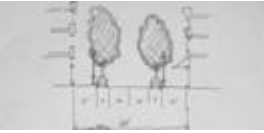
Lot Code

T 6 Town Center **60 to 108 units**



T 6 Town Center

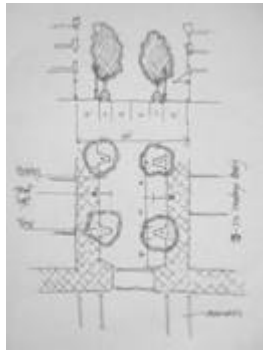
Recommendations for Code



Street section ST 60:34



Image



Lot Code

- Day 3: Planners' work session; further meetings with county planners, fire chief, city public works
- Day 4: Final Public Presentation on Saturday morning



Final Recommended Plan



Aerial Photograph and Parcel Designation, Ash Grove, MD



Next Steps Taken

- City Council approval to continue working toward goals of the plan
- Public Works has done more detailed studies
- Citizen Task Forces

Plan has led to:

- TRIM grant for trees (MO Dept. of Conservation)
- Grant from MO DOT (Federal Enhancement funds) for sidewalks
- Working with Drury University (architecture and marketing students) on design of Main Street
- Working with Missouri State Univ. planning program on plan

Missouri Chapter of the American Planning Association
awarded Ash Grove its

"2005 Outstanding Community Initiative Award"

Involve Your Citizens!
