

**Smart Growth and Sustainability in Vancouver**  
5<sup>th</sup> Annual New Partners for Smart Growth Conference - Denver - January 2006



Larry Beasley C.M.

---

---

---

---

---

---

---

---



---

---

---

---

---

---

---

---



---

---

---

---

---

---

---

---



---

---

---

---

---

---

---

---

WHAT IS IT?

A sustainable Vancouver is a community that meets the needs of the present without compromising the ability of future generations to meet their own needs.

---

---

---

---

---

---

---

---

WHAT IS IT?

It is a place where people live, work and prosper in a vibrant community of communities. In such a community, sustainability is achieved through community participation and the reconciliation of short and long term economic, social and ecological well-being.

---

---

---

---

---

---

---

---

WHAT IS IT?

Sustainability is a direction rather than a destination.

A sustainable city is one that protects and enhances the immediate and long-term well being of a city and its citizens, while providing the highest quality of life possible.

---

---

---

---

---

---

---

---

WHAT IS IT?

Sustainability requires integrated decision making that takes into account economic, ecological, and social impacts as a whole.

---

---

---

---

---

---

---

---

City Principles

1. Today's decisions must not compromise the choices of our children and future generations.
2. We are all accountable for our individual and collective actions. <sup>diversity</sup>
3. Resources must be used fairly and efficiently without compromising the sustainability of one community for another.
4. Using renewable resources is encouraged and supported, while the use of non-renewable resources should be minimized. <sup>leadership</sup>
5. Renewable resource consumption should not exceed the rate of regeneration.

---

---

---

---

---

---

---

---

City Principles

- 6. Strong collaboration and open communication between the public, the business sector, and all levels of government are important.
- 7. We value cultural, economic, and environmental diversity.
- 8. A community should provide a safe, healthy, and viable setting for human interaction, education, employment, recreation, and cultural development.
- 9. A sustainable Vancouver contributes to, and provides leadership towards, regional, provincial, national, and global sustainability.
- 10. The Vancouver economy should move forward from its dependence on non-renewable carbon based fuels, particularly for transportation, which are likely to fluctuate dramatically in price and supply.

---

---

---

---

---

---

---

---

1983



2003



---

---

---

---

---

---

---

---

LIVING FIRST STRATEGY

---

---

---

---

---

---

---

---



---

---

---

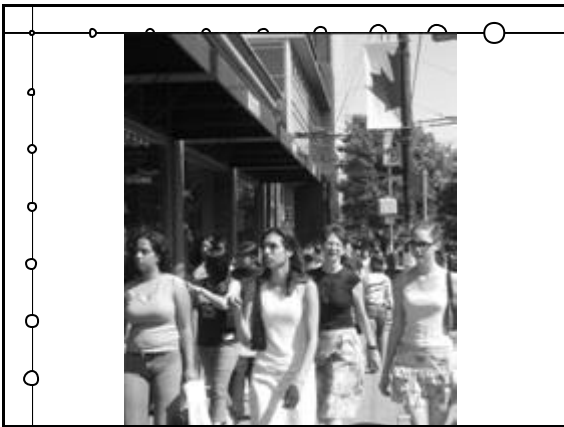
---

---

---

---

---



---

---

---

---

---

---

---

---

**DOWNTOWN GROWTH PATTERNS**  
AREA OF APPROX. 2 SQUARE MILES

1986:	<b>43,000</b>	RESIDENTS
1991:	<b>47,000</b>	RESIDENTS
1996:	<b>62,000</b>	RESIDENTS
<u>2005:</u>	<u><b>85,000</b></u>	<u>RESIDENTS</u>
2021:	<b>120,000</b>	RESIDENTS

---

---

---

---

---

---

---

---



---

---

---

---

---

---

---

---



---

---

---

---

---

---

---

---



---

---

---

---

---

---

---

---



---

---

---

---

---

---

---

---



---

---

---

---

---

---

---

---



---

---

---

---

---

---

---

---



---

---

---

---

---

---

---

---



---

---

---

---

---

---

---

---



---

---

---

---

---

---

---

---



**PUBLIC GOODS REQUIREMENTS**

CITY OF VANCOUVER

- parks**
- schools**
- daycares**
- public art**
- library facilities**
- community centres**
- walkways & bikeways**

---

---

---

---

---

---

---

---



---

---

---

---

---

---

---

---



---

---

---

---

---

---

---

---



---

---

---

---

---

---

---

---



---

---

---

---

---

---

---

---



---

---

---

---

---

---

---

---



---

---

---

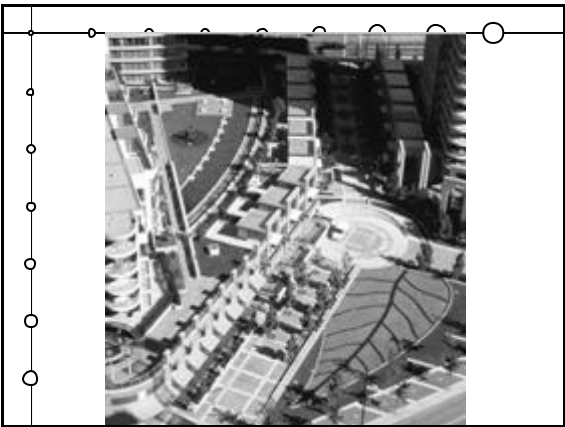
---

---

---

---

---



---

---

---

---

---

---

---

---



---

---

---

---

---

---

---

---



---

---

---

---

---

---

---

---



---

---

---

---

---

---

---

---



---

---

---

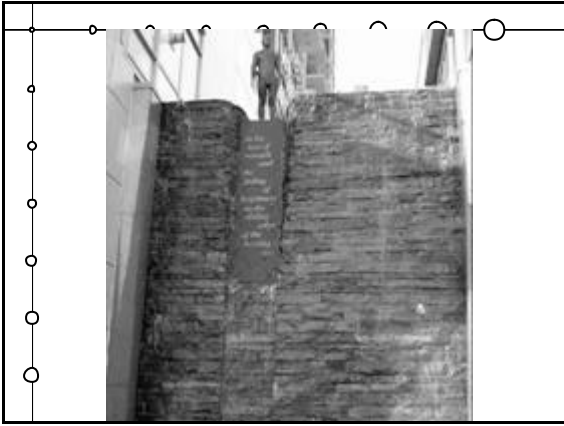
---

---

---

---

---



---

---

---

---

---

---

---

---



---

---

---

---

---

---

---

---



---

---

---

---

---

---

---

---



---

---

---

---

---

---

---

---



---

---

---

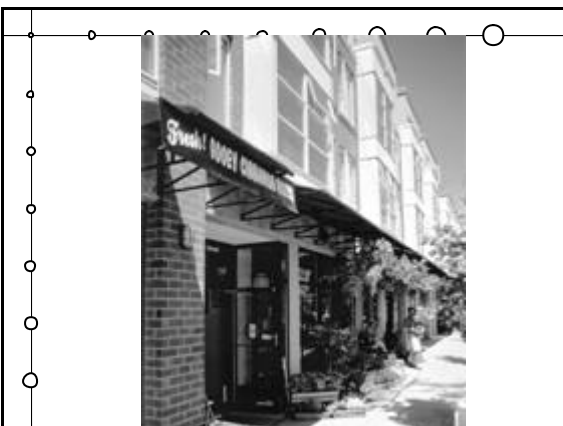
---

---

---

---

---



---

---

---

---

---

---

---

---



---

---

---

---

---

---

---

---



---

---

---

---

---

---

---

---



---

---

---

---

---


---

---

---

sustainability has been expressed in council decisions and policy for many years:

- since the 1970s: affordable housing policies
- 1990: clouds of change report
- 1994: solid waste management plan
- 1997: vancouver transportation plan
- 2002: downtown transportation plan
- 2003: food policy task force
- 2004: corporate climate change action plan
- 2005: community climate change action plan
- *underway*: city-wide green buildings program
- *underway*: sustainability precinct



sustainable decisions

---

---

---

---


---

---

---

---

**southeast false creek: the beginning**



Vancouver City Council issued a challenge to create a community that is even more sustainable:

*“on the south shore of false creek, develop a neighbourhood that is the model of sustainability, incorporating: forward-thinking infrastructure; strategic energy reduction; high-performance buildings; and high transit access”*

---

---

---

---


---

---

---

---

southeast false creek >> plan




---

---

---

---

---

---

---

---





southeast false creek >> waste management

- composting
- reuse & recycle of building materials
- 3-stream waste separation
- neighbourhood solid waste utility



---

---

---

---

---

---

---

---

southeast false creek >> green construction

- LEED gold for all new civic buildings
- 'green' retrofits to existing civic buildings
- minimum 30% energy reductions
- targeting LEED Silver or equivalency for private buildings



---

---

---

---

---

---

---

---

southeast false creek >> urban agriculture



- public community gardens
- rooftop gardens
- school gardens
- farmers market
- boulevard food production

---

---

---

---

---



---

---

---

southeast false creek >> transportation

- reduced parking requirements
- on-site car-sharing program (car co-op)
- transit-oriented development
- new neighbourhood streetcar line connecting to downtown
- walking distance to new subway line to downtown & airport
- access to local busses
- pedestrian & bicycle priority
- restricted vehicular access
- new false creek ferry terminal


---

---

---

---

---

---



---

---

southeast false creek >> environmental stewardship and learning

learning centre"

- citizen's stewardship committee
- full-cost accounting & reporting


---

---

---

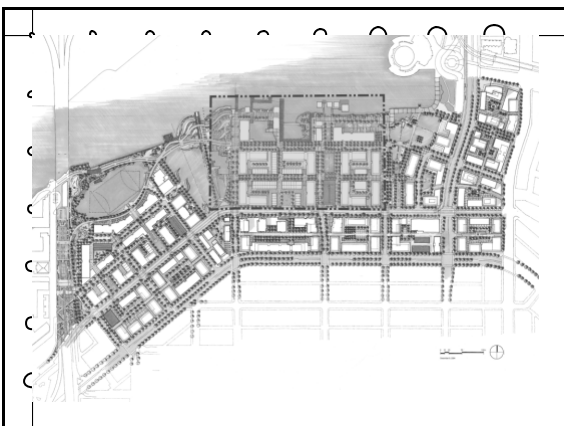
---

---

---

---

---




---

---

---

---

---

---

---

---

southeast false creek >> 2010 olympic athletes village

- athletes housing for the 2010 winterolympic games
- 2200 athletes
- 600 officials
- 600,000 sq. ft. of development
- most sustainable olympic athletes village to date
- we were already committed, even before the olympics



---

---

---

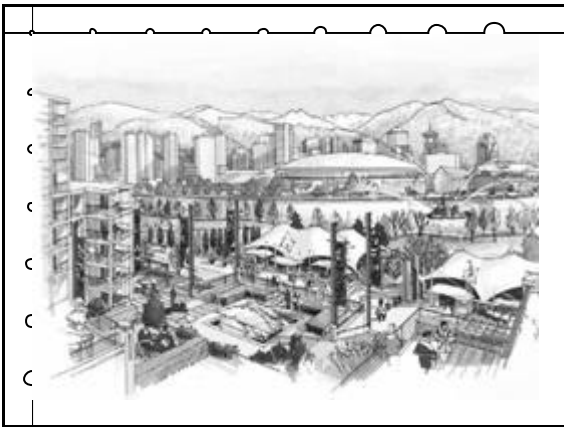
---

---

---

---

---



---

---

---

---

---

---

---

---

**Southeast False Creek Policy Statement**

*Toward a Sustainable Urban Neighbourhood and a Major Park in Southeast False Creek*

*Adopted by Vancouver City Council, October 1999*

City of Vancouver  
Planning Department

The official coat of arms of the City of Vancouver.

---

---

---

---

---

---

---

---



---

---

---

---

---

---

---

---



---

---

---

---

---

---

---

---



---

---

---

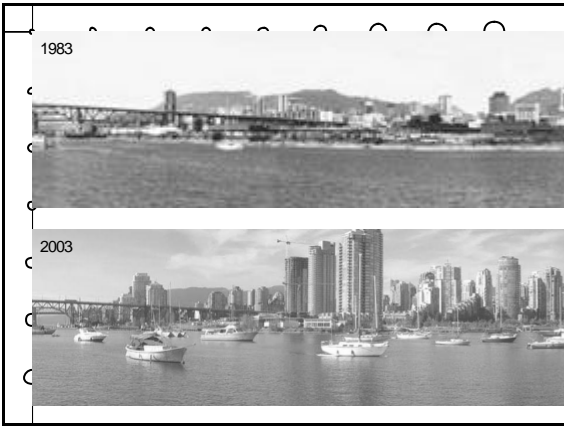
---

---

---

---

---



---

---

---

---

---

---

---

---



---

---

---

---

---

---

---

---

DISCRETIONARY  
REGULATORY  
FRAMEWORK

Planning  
CENTRAL AREA PLAN  
Draft Land Use Policy  
created by Vancouver City Council

---

---

---

---

---

---

---

---



PROACTIVE PLANNING

---

---

---

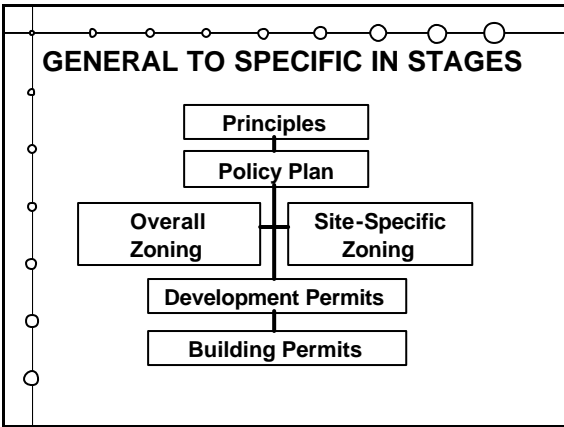
---

---

---

---

---



---

---

---

---

---

---

---

---



---

---

---

---

---

---

---

---



---

---

---

---

---

---

---

---

**JOINT DESIGN  
EXERCISES**

---

---

---

---

---

---

---

---

**PUBLIC GOODS  
PAID BY  
DEVELOPERS**

---

---

---

---

---

---

---

---





---

---

---

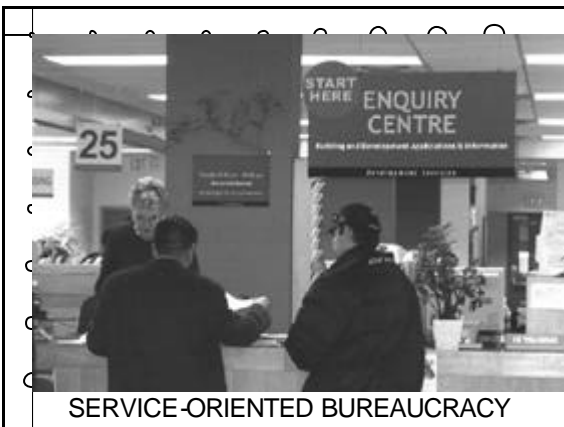
---

---

---

---

---



SERVICE-ORIENTED BUREAUCRACY

---

---

---

---

---

---

---

---



NON-POLITICAL DECISION-MAKING  
AND VERY PRESCRIBED APPEAL

---

---

---

---

---

---

---

---



---

---

---

---

---

---

---

---



---

---

---

---

---

---

---

---



---

---

---

---

---

---

---

---



---

---

---

---

---

---

---

---



---

---

---

---

---

---

---

---



---

---

---

---

---

---

---

---