



## What is Scenario Planning?

Marlie Sanderson  
Director of Transportation Planning  
North Central Florida Regional  
Planning Council

---

---

---

---

---

---

---

## Topics of Discussion

- Scenario planning- defined
- How often does it occur?
- What is the preferred number?
- What measures are used?
- Who does it?

---

---

---

---

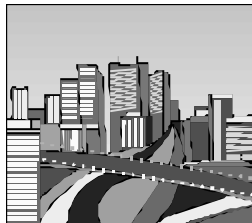
---

---

---

## Scenario planning- defined

- "stories about the future."



---

---

---

---

---

---

---

## Rip Van Winkle Technique



---

---

---

---

---

---

---

---

## Our story- Year 2000



---

---

---

---

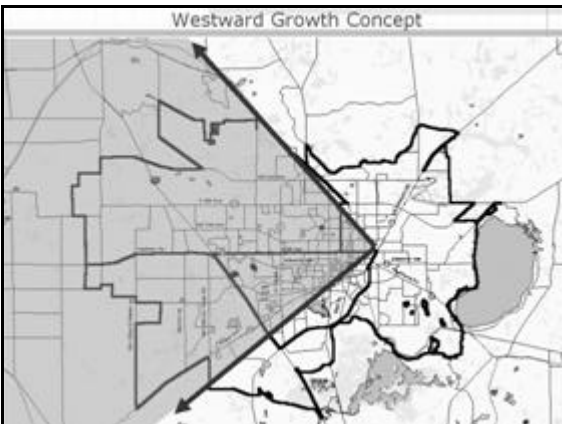
---

---

---

---

## Westward Growth Concept



---

---

---

---

---

---

---

---

## Westward Growth



---

---

---

---

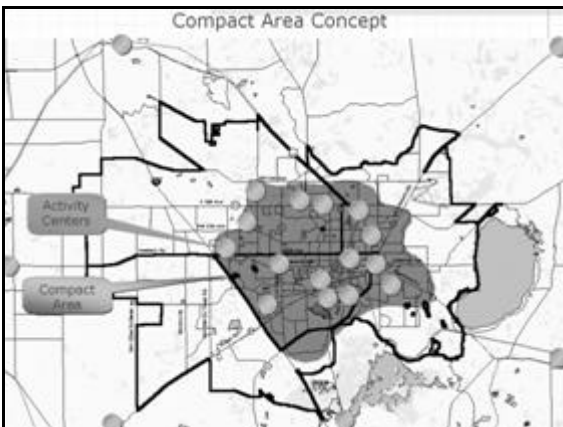
---

---

---

---

## Compact Area Concept



---

---

---

---

---

---

---

---

## Compact



---

---

---

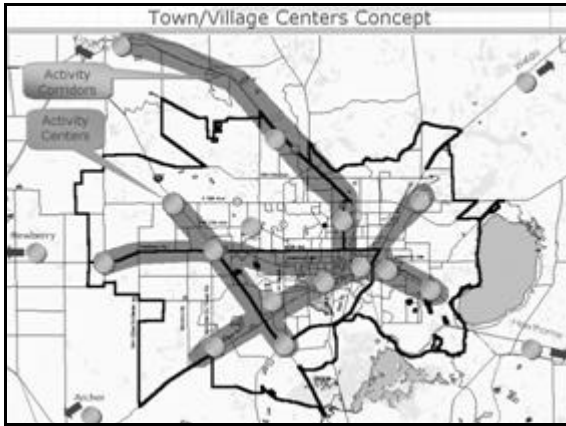
---

---

---

---

---




---



---



---



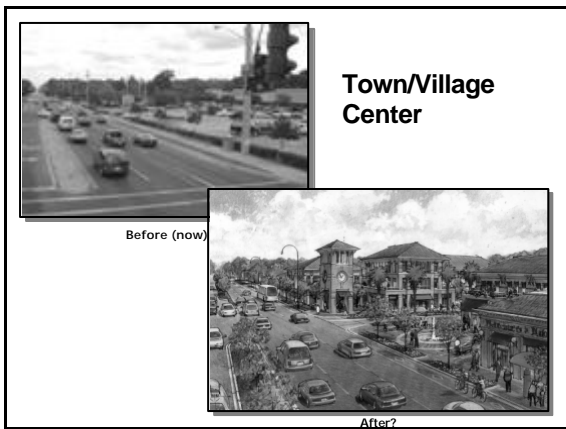
---



---



---




---



---



---



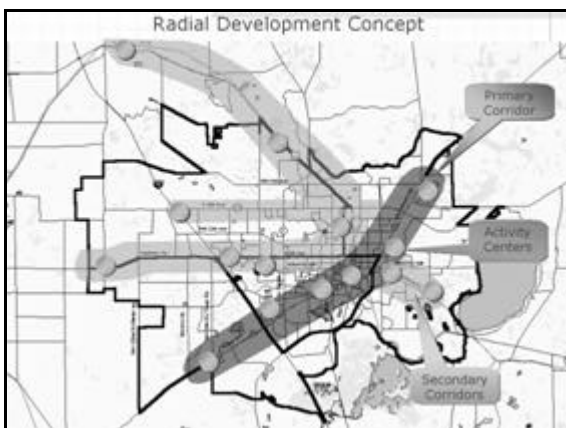
---



---



---




---



---



---



---



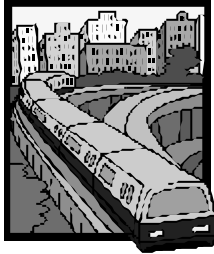
---



---

### Gainesville- Year 2025?

- Not likely



---

---

---

---

---

---

---

---

### Gainesville- Year 2025?

- More likely



---

---

---

---

---

---

---

---

### State Road 24 Transit Corridor



---

---

---

---

---

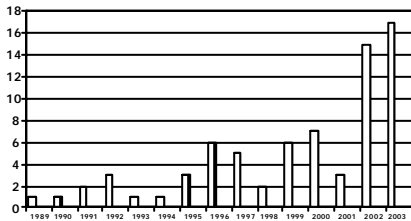
---

---

---

How often does it occur?

Number of Projects by Year



---

---

---

---

---

---

---

---

What are examples of different types of scenarios?

---

---

---

---

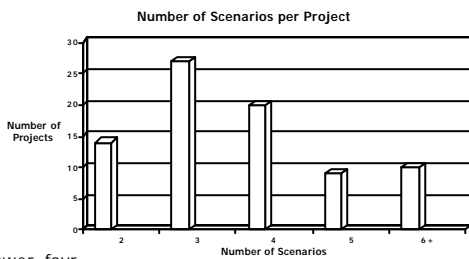
---

---

---

---

What is the preferred number of scenarios?



Answer- four

---

---

---

---

---

---

---

---

## What measures are used to evaluate scenarios?

- Vehicle miles of travel
- Average trip length
- Transit ridership
- Amount of farmland converted
- Air quality
- Energy consumption

---

---

---

---

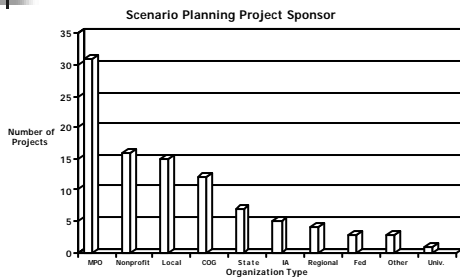
---

---

---

---

## Who does it?




---

---

---

---

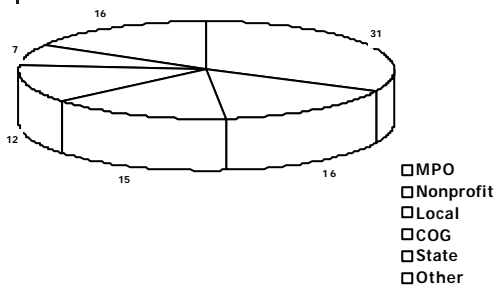
---

---

---

---

## Who does it?




---

---

---

---

---

---

---

---

## What are Metropolitan Planning Organizations (MPOs)?

---

---

---

---

---

---

---

---

## History of MPOs



- 1956 Federal-Aid Highway Act authorized the construction of a 41,000 mile interstate highway system



---

---

---

---

---

---

---

---

## History of MPOs

- During the 1960s, there was considerable opposition from cities to the interstate highway building program



---

---

---

---

---

---

---

---



## History of MPOs

- Choice of routes were left up to state highway departments, local officials were having routes imposed on them



---

---

---

---

---

---

---

---

## History of MPOs



- 1973 Highway Act established MPOs, consisting of locally-elected officials, to counter "the domineering influence of state transportation departments in pushing highway projects."



---

---

---

---

---

---

---

---

## History of MPOs

- 1975 Federal MPO rules require State highway departments to get MPO approval of upcoming federal transportation projects



---

---

---

---

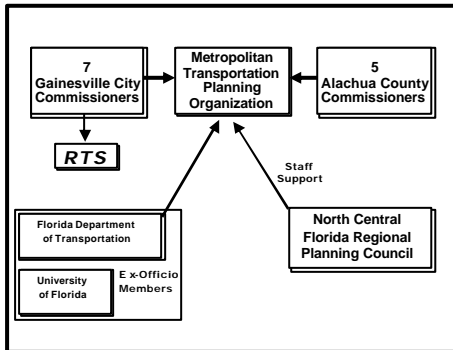
---

---

---

---

## Gainesville MTPO



---

---

---

---

---

---

---

---

### Gainesville MTPO Voting Members



City of Gainesville Commission



Alachua County Commission

---

---

---

---

---

---

---

---

### Lessons Learned

- Considerable interest and curiosity by elected officials and other citizens.



---

---

---

---

---

---

---

---

Next Time What will we do?



---

---

---

---

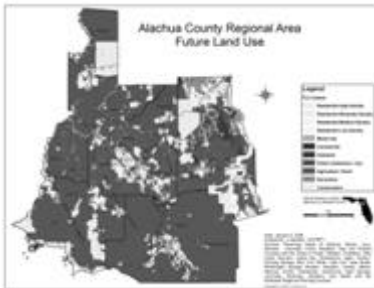
---

---

---

---

Next Time What will we do?



---

---

---

---

---

---

---

---

**Contact Information:**

Marlie Sanderson  
(352) 955-2200 extension 103  
sanderson@ncfrpc.org

---

---

---

---

---

---

---

---