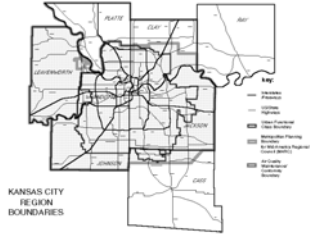


Managing Green Infrastructure for Smart Growth: On the Map in Kansas City

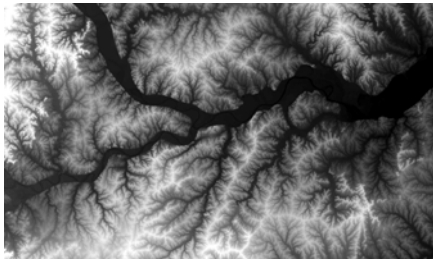
- 1.7 Million People
- 116 cities
- 8 counties
- 2 states



Managing Green Infrastructure for Smart Growth
5th Annual New Partners for Smart Growth
Denver – January 26-28, 2006



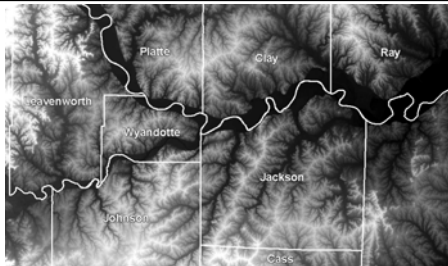
Managing Green Infrastructure for Smart Growth: On the Map in Kansas City



Managing Green Infrastructure for Smart Growth
5th Annual New Partners for Smart Growth
Denver – January 26-28, 2006



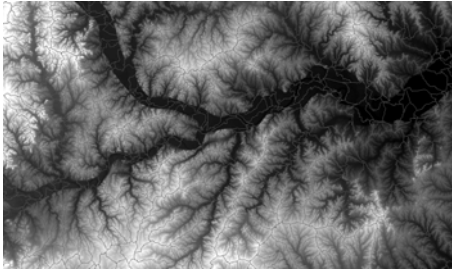
Managing Green Infrastructure for Smart Growth: On the Map in Kansas City



Managing Green Infrastructure for Smart Growth
5th Annual New Partners for Smart Growth
Denver – January 26-28, 2006



Managing Green Infrastructure for Smart Growth: On the Map in Kansas City



Managing Green Infrastructure for Smart Growth
5th Annual New Partners for Smart Growth
Denver – January 26-28, 2006



Managing Green Infrastructure for Smart Growth: On the Map in Kansas City

- Flooding & water quality
- Air quality
- Growth & development patterns
- Institutional capacity
- Problem definition

Managing Green Infrastructure for Smart Growth
5th Annual New Partners for Smart Growth
Denver – January 26-28, 2006



Managing Green Infrastructure for Smart Growth: On the Map in Kansas City

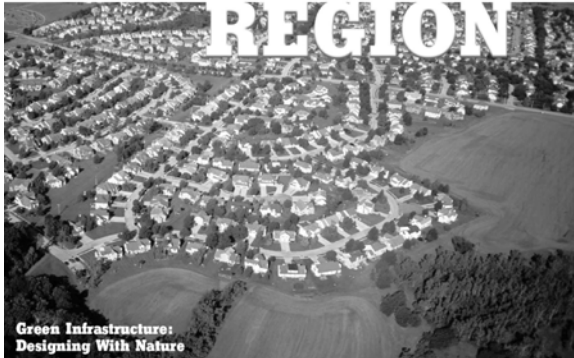
- Green Infrastructure
 - Creating Quality Places
 - MetroGreen
 - Watershed Management
 - Clean Air Action Plan



Managing Green Infrastructure for Smart Growth
5th Annual New Partners for Smart Growth
Denver – January 26-28, 2006



KANSAS CITY REGION





Creating Quality Places



Managing Green Infrastructure for Smart Growth
5th Annual New Partners for Smart Growth
Denver – January 22-23, 2005



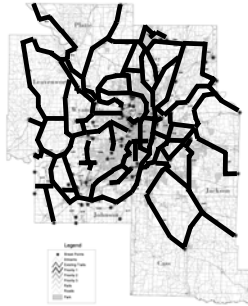
MARC
Missouri American Regional Council



MetroGreen Trails Plan

- System is divided into four priorities for future trail development:
 - existing (75 miles)
 - priority 1 (100 miles)
 - priority 2 (280 miles)
 - priority 3 (568 miles)
- Service radius of system: 1/2 mile and 2 mile - 90% of Metro population served by fully developed system

Managing Green Infrastructure for Smart Growth
5th Annual New Partners for Smart Growth
Denver – January 26-28, 2006



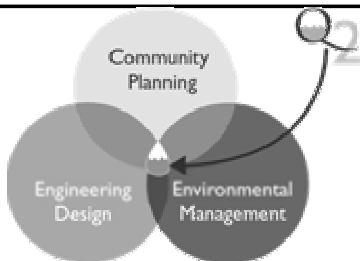
Regional Watershed Roundtables



Managing Green Infrastructure for Smart Growth
5th Annual New Partners for Smart Growth
Denver – January 26-28, 2006



Stormwater Planning Defining...



Managing Green Infrastructure for Smart Growth
5th Annual New Partners for Smart Growth
Denver – January 26-28, 2006



Reframing the



**P
R
O
B
L
E
M**



Managing Green Infrastructure for Smart Growth
5th Annual New Partners for Smart Growth
Denver – January 26-28, 2006



Clean Air Action Plan

- Utility controls
- Diesel emissions
- Education
- Sustainability
 - Urban heat island, TOD, green infrastructure, urban and community forestry, integrated watershed/land use/transportation planning, etc.

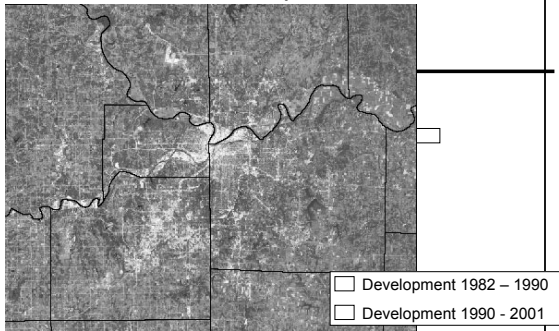
Managing Green Infrastructure for Smart Growth
5th Annual New Partners for Smart Growth
Denver – January 26-28, 2006



Regional Planning and Urban Design



The Pace of Development in Metro KC

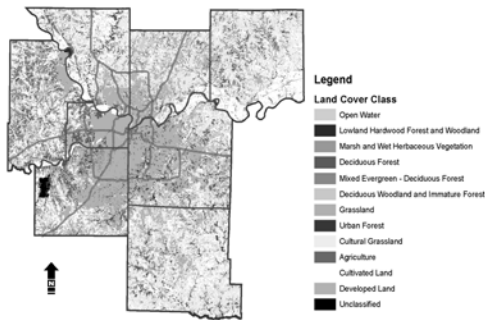


Managing Green Infrastructure for Smart Growth
5th Annual New Partners for Smart Growth
Denver - January 26-28, 2006



Image: KBS/KARS

Regional Land Cover

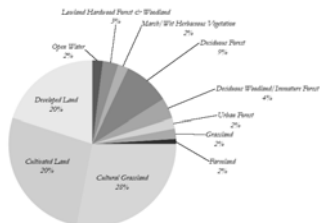


Managing Green Infrastructure for Smart Growth
5th Annual New Partners for Smart Growth
Denver - January 26-28, 2006



Distribution of Regional Land Cover

Managing Green Infrastructure for Smart Growth: On the Map in Kansas City



Managing Green Infrastructure for Smart Growth
5th Annual New Partners for Smart Growth
Denver - January 26-28, 2006



Water Resources



Lakes
Rivers
Streams

Managing Green Infrastructure for Smart Growth
5th Annual New Partners for Smart Growth
Denver – January 26-28, 2006



Water Resources

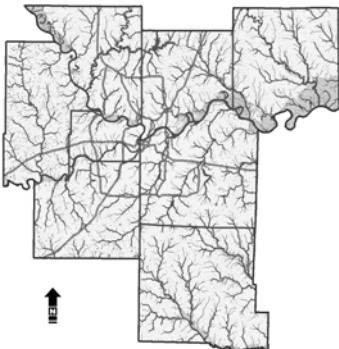


Lakes
Rivers
Streams
Wetlands

Managing Green Infrastructure for Smart Growth
5th Annual New Partners for Smart Growth
Denver – January 26-28, 2006



Water Resources

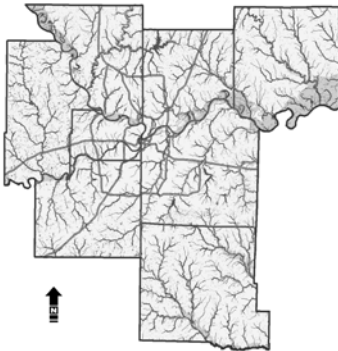


Lakes
Rivers
Streams
Wetlands
100-Year Flood Plain

Managing Green Infrastructure for Smart Growth
5th Annual New Partners for Smart Growth
Denver – January 26-28, 2006



Water Resources



Managing Green Infrastructure for Smart Growth
5th Annual New Partners for Smart Growth
Denver – January 26-28, 2006



- Lakes
- Rivers
- Streams
- Wetlands
- 100-Year Flood Plain
- Lowland Vegetation

Water Resources Compilation



Managing Green Infrastructure for Smart Growth
5th Annual New Partners for Smart Growth
Denver – January 26-28, 2006



- Lakes
- Rivers
- Streams
- Wetlands
- 100-Year Flood Plain
- Lowland Vegetation

Steep Slopes

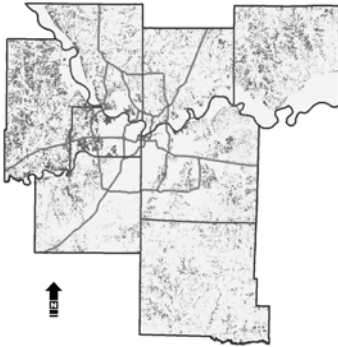


Managing Green Infrastructure for Smart Growth
5th Annual New Partners for Smart Growth
Denver – January 26-28, 2006



- Steep Slopes

Inland Resources

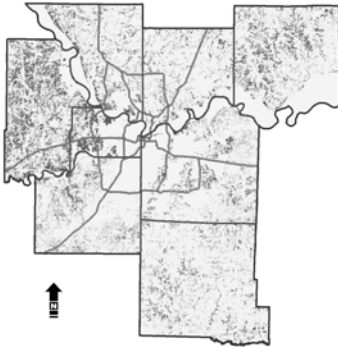


Forests and Woodlands

Managing Green Infrastructure for Smart Growth
5th Annual New Partners for Smart Growth
Denver – January 26-28, 2006



Inland Resources



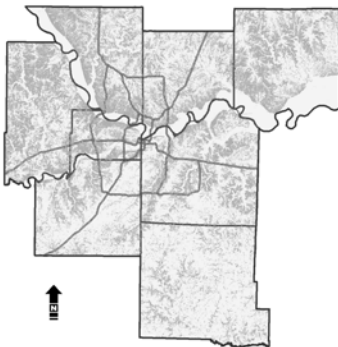
Forests and Woodlands

Grasslands

Managing Green Infrastructure for Smart Growth
5th Annual New Partners for Smart Growth
Denver – January 26-28, 2006



Inland Resources Compilation



Forests and Woodlands

Grasslands

Steep Slopes

Managing Green Infrastructure for Smart Growth
5th Annual New Partners for Smart Growth
Denver – January 26-28, 2006



Water and Upland Resources



Water Resources
Upland Resources

Managing Green Infrastructure for Smart Growth
5th Annual New Partners for Smart Growth
Denver – January 26-28, 2006



APPLICATIONS

- Develop Supportive Regional Policy
by County and Municipality
- Integrate Plans with Recreation, Economic
Development, Stormwater Management,
Regional Quality of Life Initiatives

Managing Green Infrastructure for Smart Growth
5th Annual New Partners for Smart Growth
Denver – January 26-28, 2006



Parks and Trails

PARKS & GREENWAYS



Parks
Planned & Existing
MetroGreen Trails

Managing Green Infrastructure for Smart Growth
5th Annual New Partners for Smart Growth
Denver – January 26-28, 2006



Conservation Planning Starting Point



PARKS & GREENWAYS

Water Resources
Upland Resources
Parks
Planned & Existing
MetroGreen Trails

Managing Green Infrastructure for Smart Growth
5th Annual New Partners for Smart Growth
Denver – January 26-28, 2006



Stream Buffers



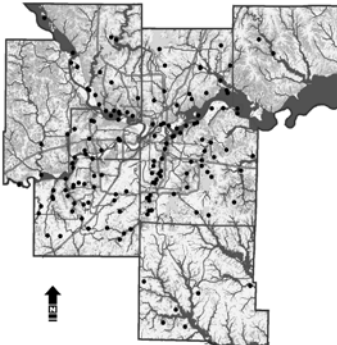
STREAM BUFFERS

Water Resources
Upland Resources
Parks

Managing Green Infrastructure for Smart Growth
5th Annual New Partners for Smart Growth
Denver – January 26-28, 2006



MetroGreen Implementation



HABITAT RESTORATION

Water Resources
Upland Resources
Parks
Planned & Existing
MetroGreen Trails
Important Natural
Resource Sites

Managing Green Infrastructure for Smart Growth
5th Annual New Partners for Smart Growth
Denver – January 26-28, 2006



Watershed Planning

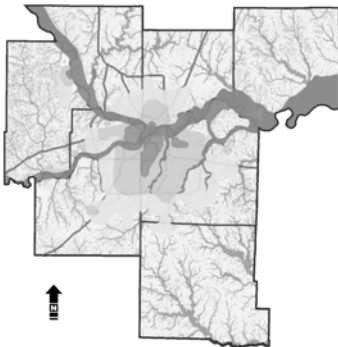


Managing Green Infrastructure for Smart Growth
5th Annual New Partners for Smart Growth
Denver – January 26-28, 2006



Variable Regional Needs

(RE-) DEVELOPMENT



- Urban Core
- 1st Ring Suburbs
- 2nd Ring Suburbs
- Riparian/Flood Area

Managing Green Infrastructure for Smart Growth
5th Annual New Partners for Smart Growth
Denver – January 26-28, 2006



Emergent policy foci

- Substantive focus areas
 - Development regulations (400 sq. miles in 25 yrs)
 - Watershed infrastructure (metro need > \$2B)
 - Multi-purpose management of parks, greenways (1,100+ lineal miles)
 - Stream setbacks (150,000 acres in metro)
 - Highway rights of way (40,000 acres in metro)

Managing Green Infrastructure for Smart Growth
5th Annual New Partners for Smart Growth
Denver – January 26-28, 2006



Building institutional capacity across scales

POLICY
OR PLAN



COMMUNITY
ENGAGEMENT

OUTREACH &
COMMUNICATIONS

Managing Green Infrastructure for Smart Growth
5th Annual New Partners for Smart Growth
Denver – January 26-28, 2006



Thank you:

Missouri Department of Conservation
Missouri Department of Natural Resources
Kansas Data Access & Support Center
Missouri Spatial Data Information Service
Kansas Biological Survey/Kansas Applied Remote Sensing

U.S. Army Corps of Engineers
Natural Resources Conservation Service
Johnson County, Kansas
Jackson County, Missouri
USDA National Agroforestry Center
University of Missouri Center for Agroforestry

Managing Green Infrastructure for Smart Growth
5th Annual New Partners for Smart Growth
Denver – January 26-28, 2006

