

Rail Buildout

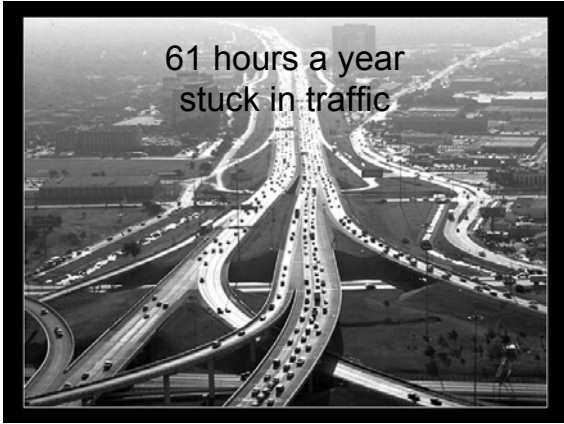
TRANSIT-ORIENTED HOUSING

- DEMAND DOUBLE IN THE NEXT 20 YEARS.
- 71% OF OLDER HOUSEHOLDS WANT TO BE WITHIN WALKING DISTANCE OF TRANSIT.

BY 2025, THE DALLAS AREA

- WILL ADD 260,000+ TOD UNITS
- MORE THAN A 350% INCREASE.
- WILL RANK SECOND ONLY TO L.A.







\$3.3 Billion in Transit- Oriented Development





RAIL-SERVED PROPERTIES:

Residential: 39%
greater increase

Office: 53% greater
increase

DART FY 2005 Ridership Change vs. 2004			
	2004	2005	Change from 2004
Bus	38,274,569	39,775,028	3.9%
LRT	16,488,187	17,487,212	6.1%
TRE	2,168,300	2,155,226	-0.6% ☆
Fixed-Route Total	56,931,056	59,417,466	4.4%
HOV	34,987,850	37,360,150	6.8%
System Total	91,918,906	96,777,616	5.3%

☆ National Hockey league season cancelled. Lost special events
Ridership to Dallas Stars home game.







"It's an amenity that is very attractive to many people ... DART adds a whole new dimension of convenience to a lot of people."

15th Street Developer Richard Howe









Downtown Dallas



- 3,500 living in refurbished high-rises and lofts
- At least 2,500 more planned
- Target of 10,000 units by 2010







“The people who live downtown are looking for urban living. If we didn’t have the light rail, it wouldn’t be as urban as it is.”

Central Dallas Association

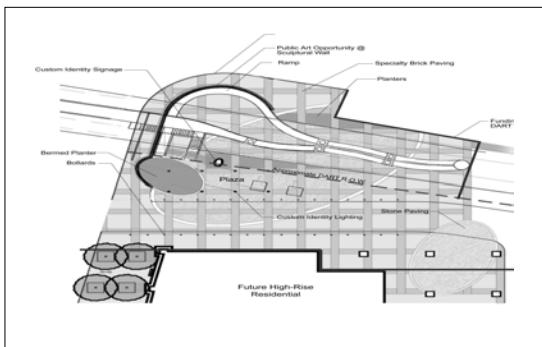








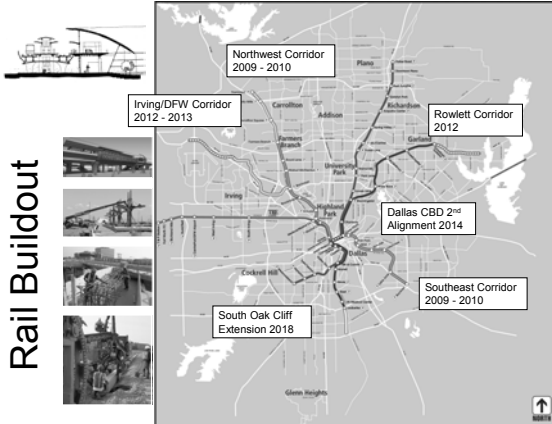
Park Lane LRT Station Pedestrian Overpass



North Central Texas Council of Governments
2015 Sustainable Development Call for Projects

Public Sponsor: DART
Private Sponsor: Harvest Partners

Rail Buildout





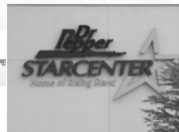






Farmers Branch Station

DALLAS AREA RAPID TRANSIT



Carrollton or Farm



Carrollton Square Station

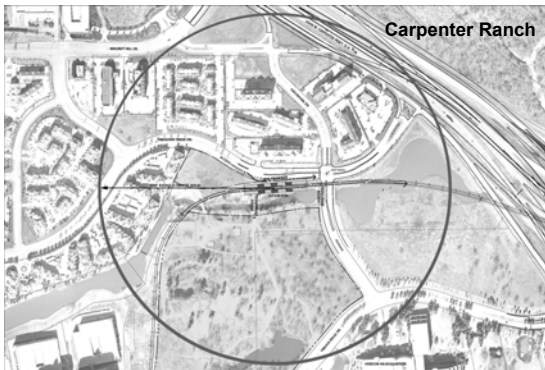
DALLAS AREA RAPID TRANSIT

SITE PLAN









City of Dallas Resolution
recognizes DART's role in:

- Increasing tax base
- Improving quality of life
- Spurring TOD

A JOINT DEVELOPMENT
BETWEEN...

- CITIES
- TRANSIT AGENCIES
- DEVELOPERS & INVESTORS

DART'S DIRECTOR OF
ECONOMIC DEVELOPMENT

- Serves as a point of contact
- Counsels developers
- Encourages cities to incorporate TOD into land- use plans
- Works with developers to create TOD projects on DART-
owned land







