

## Livable Communities Rocky Mountain Style

A Presentation to  
New Partners for Smart Growth  
Denver, CO

Thursday, January 26, 2006

Bryan Hurlbutt-Program Coordinator  
&  
Caitlin O'Brady-Research Manager

The Colorado College  
State of the Rockies Project




---

---

---

---

---

---

---

---



### We Are:

Colorado College students, faculty, and staff interested in the long-term viability of Rockies' communities and environment.



THE COLORADO COLLEGE  
ROCKIES PROJECT

---

---

---

---

---

---

---

---



### We Strive To:

- Inform stakeholders about critical regional issues.
- Encourage dialogue and collaborative action to protect and nurture the Rockies.
- Connect peer communities by sharing best practices.
- Stimulate Colorado College student contributions and outreach in the Rockies.



THE COLORADO COLLEGE  
ROCKIES PROJECT

---

---

---

---

---

---

---

---

The 2005 Colorado College  
State of the Rockies Report Card



1. Creative Occupation Patterns
2. Civic Engagement and Capacity
3. National Parks Under Stress
4. Rockies Sprawl Index
5. The Toxic Rockies

*Edited by*  
**Prof. Walt Hecox**  
**F. Patrick Holmes**  
**Bryan Hurlbutt**

THE COLORADO COLLEGE  
ROCKIES PROJECT 

---

---

---

---

---

---

---

---



2005 State of the Rockies Conference

Colorado College Campus, Colorado Springs  
April 5-7

---

---

---

---

---

---

---

---



THE COLORADO COLLEGE  
ROCKIES PROJECT 

The Rocky Mountain Study Region



**8 States**—Arizona, Colorado, Idaho,  
Montana, Nevada, New Mexico, Utah, &  
Wyoming

**281 Counties**

THE COLORADO COLLEGE  
ROCKIES PROJECT 

---

---

---

---

---

---

---

---



## The Wild West: Our Mythic Home



THE COLORADO COLLEGE  
ROCKIES PROJECT



---

---

---

---

---

---

---

---



What is the  
reality?

THE COLORADO COLLEGE  
ROCKIES PROJECT



---

---

---

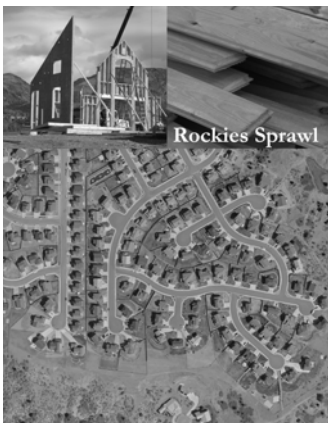
---

---

---

---

---



## Rockies Sprawl Index

Grading the Rockies:  
Sprawl

By F. Patrick Holmes

THE COLORADO COLLEGE  
ROCKIES PROJECT



---

---

---

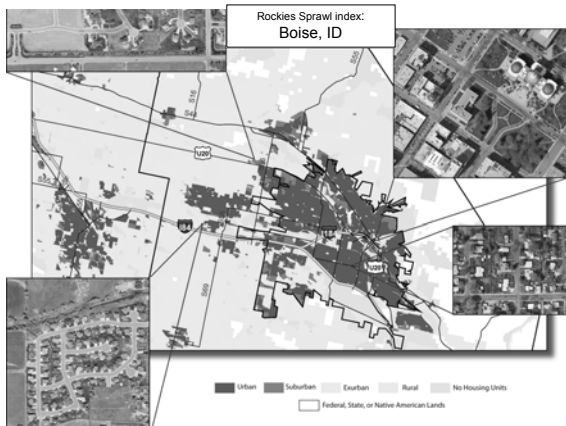
---

---

---

---

---




---

---

---

---

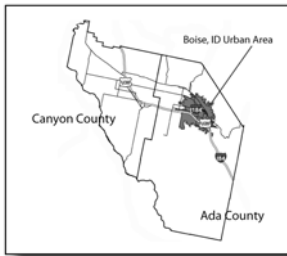
---

---

---

---

Boise, ID



### Metric 1: Density of the Urban Area

USGS Land Cover definition of the  
Boise Urban Area

THE COLORADO COLLEGE  
ROCKIES PROJECT

---

---

---

---

---

---

---

---

Boise, ID



### Metric 2: Density of the Urban Core

Boise Urban Core measured as 25% of the total  
Urban Area - a radius of 2.1 miles from the central  
business district

THE COLORADO COLLEGE  
ROCKIES PROJECT

---

---

---

---

---

---

---

---

Boise, ID



Metrics 3 & 4:

Density of Areas built  
in the '90s  
and  
the Expansion Estimate

Residential areas primarily built  
during the 1970s  
Residential areas primarily built  
during the 1990s

THE COLORADO COLLEGE  
ROCKIES PROJECT

---

---

---

---

---

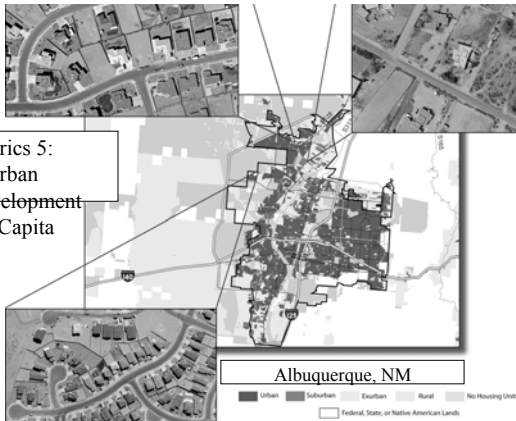
---

---

---

---

---



Metrics 5:  
Exurban  
Development  
per Capita

Albuquerque, NM  
Urban Suburban Exurban Rural No Housing Units  
Federal, State, or Native American Lands

---

---

---

---

---

---

---

---

---

---

### Rockies Sprawl Rankings: Smaller Metro Areas

\*Red numbers indicate more sprawl than average for that measure

	Rockies Smaller Metro Areas	Housing Boom Density (acres per housing unit)	Urban Area Density (acres per housing unit)	Urban Core Density (acres per housing unit)	% Change in Average Distance from Downtown of Housing Boom Areas in 1990 versus 1970	Acres of Exurban Development per Capita
Most Sprawl	Las Cruces, NM	4.4	0.0	0.9	108%	0.8
-	Grand Junction, CO	2.2	1.4	0.9	93%	0.6
-	Flagstaff, AZ	4.3	0.7	0.6	43%	1.5
-	Santa Fe, NM	4.4	1.0	0.7	-30%	1.0
-	Pocatello, ID	2.1	1.1	0.9	-5%	0.4
-	Billings, MT	0.8	1.0	0.7	47%	0.7
-	Yuma, AZ	1.4	0.8	0.5	70%	0.4
-	Casper, WY	0.0	0.8	0.8	-100%	0.4
-	Cheyenne, WY	1.9	0.7	0.5	-6%	0.4
-	Missoula, MT	3.8	0.6	0.4	-67%	0.5
Least Sprawl	Great Falls, MT	0.0	0.6	0.4	-100%	0.4
	Average	2.3	0.8	0.7	5%	0.6

THE COLORADO COLLEGE  
ROCKIES PROJECT

---

---

---

---

---

---

---

---

---

---

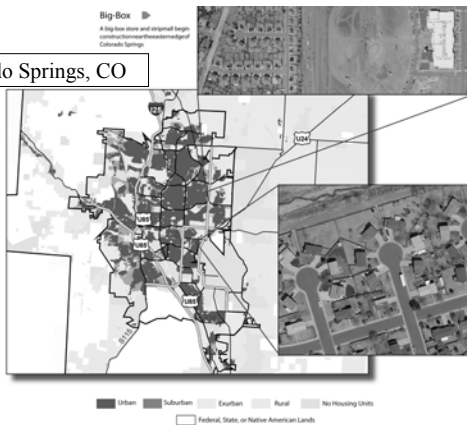
## Rockies Sprawl Rankings: Larger Metro Areas

\*Red numbers indicate more sprawl than average for that measure

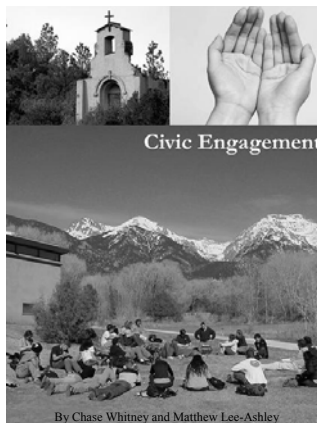
	Rockies Larger Metro Areas	Housing Boom Density (acres per housing unit)	Urban Area Density (acres per housing unit)	Urban Core Density (acres per housing unit)	% Change in Average Distance from Downtown of Housing Boom Areas in 1990 versus 1970	Acres of Exurban Development per Capita
Most Sprawl	Fort Collins, CO	4.2	1.4	1.0	-18%	1.6
-	Pueblo, CO	6.6	1.2	0.6	1%	0.7
-	Albuquerque, NM	3.1	1.2	1.2	57%	0.4
-	Colorado Springs, CO	2.6	1.0	0.8	206%	0.5
-	Tucson, AZ	2.7	0.8	0.7	61%	0.6
-	Salt Lake, UT	1.9	0.8	0.8	124%	0.2
-	Denver, CO	2.2	1.1	0.5	67%	0.3
-	Phoenix, AZ	1.8	0.9	0.8	51%	0.2
-	Boise, ID	3.2	0.8	0.4	36%	0.8
-	Reno, NV	2.2	0.9	0.6	53%	0.1
-	Las Vegas, NV	1.8	0.8	0.6	70%	0.1
Least Sprawl	Provo, UT	3.4	0.5	0.3	7%	0.2
	Average	3.0	0.9	0.7	58%	0.4

THE COLORADO COLLEGE  
ROCKIES PROJECT

## Colorado Springs, CO



## Civic Engagement and Capacity



Measuring Social Capital  
for 281 Counties in the  
8-State Rocky Mountain  
West

THE COLORADO COLLEGE  
ROCKIES PROJECT

## Rockies Social Capital



### The Western Cowboy Myth:

- We fend for ourselves
- We settle disputes with guns, not collaboration
- We live in isolation

### Rockies Reality:

- We're dependent on government
- We're dependent on mutual support
- We live near each other

THE COLORADO COLLEGE  
ROCKIES PROJECT



---

---

---

---

---

---

---

## Social networks have both private & public value

### Networks are created through connections between individuals:

- Volunteer organizations
- Extended family
- Bowling leagues
- Professional acquaintances
- Internet chat groups



THE COLORADO COLLEGE  
ROCKIES PROJECT



---

---

---

---

---

---

---

## *Bowling Alone*

The Collapse and Revival of American Community  
by Robert D. Putnam (2000)

### 1950s & 1960s—Peak of American Involvement in Civic Life

- Glut of leisure
- Boost in civic participation

### A Turn for the Worse

- Participation down in 1970s
- Gets worse through 1980s & 1990s

### Putnam Uses Data to:

- Document this decline in American civic life
- Illustrate the importance of civic participation
- Answer why involvement is down
- Suggest how civic health can be revitalized



THE COLORADO COLLEGE  
ROCKIES PROJECT



---

---

---

---

---

---

---

## Why Is Social Capital Eroding?



- Education? No...education is UP
- Pressures of Time & Money
- Mobility & Sprawl
- Technology & Mass Media
- Generational Change
- Change in Family Structure

THE COLORADO COLLEGE  
ROCKIES PROJECT

## How Do We Revitalize Civic Participation?

### Social Innovation

- Don't try to revert to good 'ol days
- Must spawn era of civic inventiveness
- Reinvent 21<sup>st</sup> century versions of successful past civic organizations & movements

### Facilitating Engagement

- Individuals need to commit to engagement
- Government & groups need to facilitate policies & structures supportive to engagement

### Important Areas to Target

- Youth education
- Social workplaces
- New urbanism & creating a sense of place
- Spiritual participation
- Active technology
- Active political involvement
- Active leisure



THE COLORADO COLLEGE  
ROCKIES PROJECT

## Our Research

### We Measured:

- Existing civic health
- For all 281 Rockies' counties
- Using social capital data



THE COLORADO COLLEGE  
ROCKIES PROJECT



## Civic Capacity and Engagement: Indicators

Indicator	Civic Capacity	Civic Engagement
Charitable Giving	Civic capacity is determined by the number of organizations present per 1000 people, per capita charitable gross assets, and per charity foundation assets. The concentration of charities, and per capita assets demonstrates the operational capacity of charities in each county.	Civic engagement is determined by the percentage of discretionary income given to charity.
Community Health	Civic capacity is determined by the number of physicians and dentists per 100,000 people, whether or not the county has a community health center, and if the county is judged to be a "health profession shortage area."	Civic engagement is determined based upon the assumption that lower behavioral risk factor scores, and a longer life expectancy signifies a higher level of civic engagement.
Education Attainment	Civic capacity is determined by per student expenditures, the growth in education expenditures, and the state's overall commitment to education -- presented as a percent of taxable resources spent on education.	Civic engagement is determined by high school graduation rates and higher degree attainment.
Library Usage	-	Civic engagement is determined by how much a county utilizes its library. By dividing total visits by the service population, we calculate the number of times the entire service population, or its equivalent, has utilized a county's library assets per year.
Newspaper Concentration	Civic capacity is determined by the rate at which newspapers are published per 100,000 people. A higher concentration of newspapers indicates a higher civic capacity.	-
Political Contributions	-	Civic engagement is determined by the amount per capita given to any candidate or party.
Religious Involvement	Civic capacity is determined by the number of congregations available to county residents per 1000 people.	Civic engagement is determined by the percentage of a county's population measured as religious attendees.
Voter Participation	-	Civic engagement is determined by the percentage of the estimated voter aged population that participated in the 1996, 2000, and 2004 presidential elections.

---

---

---

---

---

---

---

---

---

---

---

---

## Civic Engagement and Capacity

### Social Capital—Metropolitan Top Ten

Area Name	Composite Grade
Boulder, Colorado [08013]	A
Denver, Colorado [08031]	A
Missoula, Montana [30063]	A
Carbon, Montana [30009]	A
Ada, Idaho [16001]	A
Summit, Utah [49043]	A-
Douglas, Colorado [08035]	A-
Yellowstone, Montana [30111]	A-
Larimer, Colorado [08069]	A-
Santa Fe, New Mexico [35049]	A-

THE COLORADO COLLEGE  
ROCKIES PROJECT

---

---

---

---

---

---

---

---

---

---

---

---

## 2006 Report Card Topics:

Ranching in the Rockies: Threats and Signs of Hope

Conservation in Action: How The Nature Conservancy Works

Preserving Biodiversity: Addressing Threatened, Endangered and Invasive Species in the Rockies

Climate Change: What Happens in A Warmer Rockies?

New Approaches to Governing the Rockies

Environmental Justice: Protecting Humans and the Environment

New Resource Management Techniques in the Rockies

Nurturing Our Families and Youth: Children, Teens & Families



THE COLORADO COLLEGE  
ROCKIES PROJECT

---

---

---

---

---

---

---

---

---

---

---

---



Please Join Us for the

## 2006 State of the Rockies Conference

On the Colorado College Campus,  
Colorado Springs

April 10-14<sup>th</sup>

THE COLORADO COLLEGE  
ROCKIES PROJECT



---

---

---

---

---

---

---

---

Rockies Sprawl index

### Rockies Metro Areas

Metropolitan Statistical Areas of the Rockies (2000)	
Albuquerque, NM MSA	Great Falls, MT MSA
Bernalillo County	Cascade County
Sandoval County	Las Cruces, NM MSA
Valencia County	Dona Ana County
Billings, MT MSA	Las Vegas, NV-AZ MSA
Yellowstone County	Mohave County, AZ
Boise City, ID MSA	Clark County, NV
Ada County	Nye County, NV
Canyon County	Missoula, MT MSA
Casper, WY MSA	Missoula County
Natrona County	Phoenix Mesa, AZ MSA
Cheyenne, WY MSA	Maricopa County
Laramie County	Pinal County
Colorado Springs, CO MSA	Pocatello, ID MSA
El Paso County	Bannock County
Denver-Boulder-Greeley, CO CMSA	Provo-Orem, UT MSA
Boulder County	Utah County
Denver, CO PMSA	Pueblo, CO MSA
Adams County	Pueblo County
Arapahoe County	Reno, NV MSA
Denver County	Washoe County
Douglas County	Salt Lake City-Ogden, UT MSA
Jefferson County	Davis County
Greeley, CO PMSA	Salt Lake County
Weld County	Weber County
Flagstaff, AZ-UT MSA	Santa Fe, NM MSA
Cocconino County, AZ	Los Alamos County
Kane County, UT	Santa Fe County
Fort Collins-Loveland, CO MSA	Tucson, AZ MSA
Larimer County	Pima County
Grand Junction, CO MSA	Yuma, AZ MSA
Mesa County	Yuma County

---

---

---

---

---

---

---

---