

Continuing Education Process for ASHRM

- 1) How to earn additional CE Credits through the ASHRM Learning Center.
 - a. Select 'Educational Content' from the menu bar at the top of the Learning Center.
 - b. Select the conference you wish to purchase CE Credits from. (ie 2009 ASHRM Annual Meeting)
 - c. Scroll down the page until you see 'Conference Set'
 - d. Click on the 'Purchase Options', you will see two options
 - i. Full Conference Online Access without CE credits for \$399 (unless you were an attendee and then these recordings will be free to you)
 - ii. Bundled Recording Set of Patient Safety & Legal/Regulatory Educational Track Sessions for \$229
 - e. Select the option you would like and click the 'purchase' button.
 - f. You will be redirected to the cart summary, click checkout – once you click checkout – you will be directed to the login page... if you were an attendee or have an existing account on the ASHRM Learning Center – use that now to login, if you don't have an account and have never created one before – select 'create an account'.
 - g. Once you have successfully logged in – click on the cart in the top right hand corner of the screen.
 - h. You will be directed to the cart summary, click checkout, confirm you are logged in and select 'click here to continue'.
 - i. Complete the checkout information to process your order.
 - j. You will receive an email confirmation of your order.
- 2) Once your order is complete, click 'My Account' from the top menu bar.
- 3) From the My Account page you will see on the right hand bottom corner 'My Transcript'.
- 4) Click on the My Transcript page. This will take you to the list of CE courses available for you to complete your additional CE Credits.

My Transcript

[Print Education Certificates](#)

Course Title	Completion Date	Credit Hours	Status
(FR-19) Ambulatory Surgery Centers: Does Your Risk Program Work?	01/18/2010	1.00	Complete
(SA-13) Assessing Risk in Serious and Sentinel Events	01/18/2010	1.00	Complete
(SA-21) Avoiding Slippery Slopes-Practical Tips for Office Practices	01/18/2010	1.00	Complete

Course Title	Credit Hours	Status
(FR-11) Case Law, Legislative & Regulatory Case Law Update	1.50	View Course Complete Test
(SU-04) CMS Giveeth, RACs Taketh Away: New Medicare Payment and Audit Initiatives	1.00	View Course Complete Test
(SA-12) CMS Grievance Requirements: Blessing or Nightmare?	1.00	View Course Complete Test Complete Evaluation
(FR-04) Common Risk Issues Associated with Medical Research and IRB's	1.00	View Course Complete Test Complete Evaluation

- The page is broken down into two sections – completed and available. The top section will contain all CE test's that you have already taken and completed and received certificates for. The bottom section will contain those yet to be completed and/or those that you are still working on.
- To begin taking a Continuing Education test, find the course title you'd like to complete and select 'view course'.

Session Information

ASHRM 2009 Annual Conference & Exhibition

[Click here](#) to go to the previous page

Avoiding Slippery Slopes-Practical Tips for Office Practices

Date: Saturday, October 24, 2009

Time: 2:30 PM to 3:30 PM

PRESENTER:

 **Judy Klein**, Director of Risk Management, OHA Insurance Solutions, Inc.

When healthcare facilities acquire physician office practices, it's important to assure that risks are managed in these unique environments. Using case scenarios, this session reviews office practice claims data and prevalent allegations to focus on key areas to address in the office practice setting from a risk, liability and patient safety perspective. Take-home tools and policies are reviewed and shared.

Audio Synchronized to PowerPoint

Online CE Course

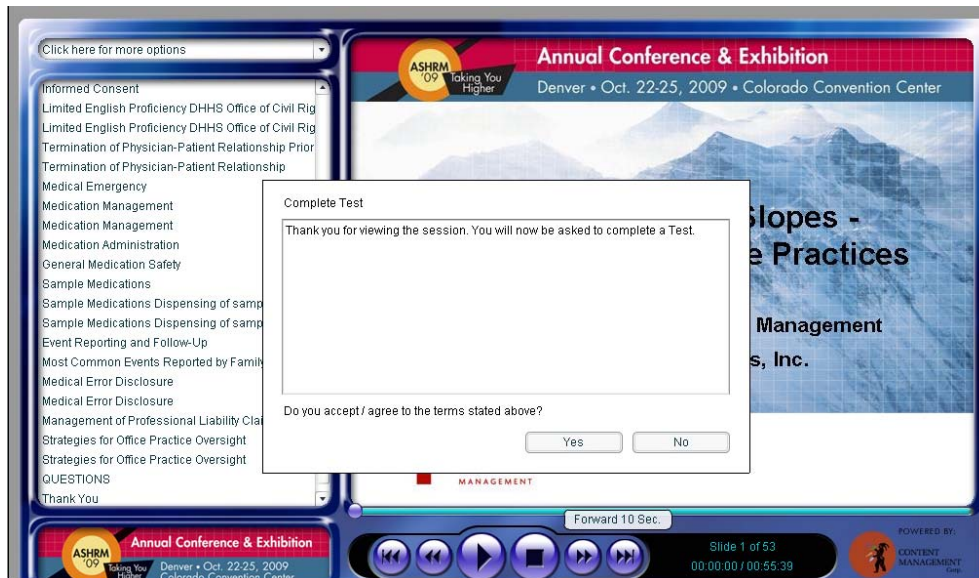
[VIEW](#)

[VIEW](#)

- 7) You will be redirected to the Session Information page – where you can read about the session you are about to take the CE test for.
- 8) Click on the view button just beneath the 'Online CE Course' to view the presentation that was recorded at the conference noted at the top of the page.
- 9) The presentation will launch and you will need to watch the entire presentation.



- 10) At the end of the presentation a box will appear that you will select yes to accept the terms and be directed to the CE Test page.



- 11) Upon selecting yes, the CE Test page will appear on the screen, where you will answer test questions in the form of multiple choice or True/False and pass the test based on the information you obtained while watching the presentation.

Learning Center Home	Educational Content	My Account	Search	Home	Contact Us	Log Out
----------------------	---------------------	------------	--------	------	------------	---------

Welcome test ashrm certificate

Test

[Click here for My Transcript](#)

Avoiding Slippery Slopes-Practical Tips for Office Practices

- The top 5 specialties in the CRICO outpatient claim data include:
 - ☐ a. Dermatology
 - ☐ b. Obstetrics and Gynecology
 - ☐ c. Pathology
 - ☐ d. Orthopedic Surgery
 - ☐ e. Internal Medicine
- Potential risk areas in office practice that require evaluation include ensuring that procedures performed by physicians in office practice match those that they are credentialed/privileged for in the hospital setting; and that new services or new technologies being considered (often for revenue generation) have been evaluated for the risk they present.
 - ☐ a. True
 - ☐ b. False

Learning Center Home | Educational Content | My Account | Search | Home | Contact Us | Log Out | Welcome test ashrm certificate

Test

[Click here for My Transcript](#)

Avoiding Slippery Slopes-Practical Tips for Office Practices

Answer Summary

		Percentage
1	<p>The top 5 specialties in the CRICO outpatient claim data include:</p> <p>Your answer: b</p> <p>b: Obstetrics and Gynecology</p> <p>Correct answer: b,d,e</p> <p>d: Obstetrics and Gynecology</p> <p>e: Orthopedic Surgery</p> <p>e: Internal Medicine</p>	<p>✓ You have 4 right answers</p> <p>✗ You have 1 incorrect answers</p> <p>Percentage Correct: 80%</p>
2	<p>The presenter identified contributing causes for delay in diagnosis claims. Which precipitating factors were singled out?</p> <p>Your answer: b</p>	

12) Once you have successfully passed the test, you will select 'Click here for My Transcript'.

Learning Center Home | Educational Content | My Account | Search | Home | Contact Us | Log Out | Welcome test ashrm certificate

My Transcript

[Print Education Certificates](#)

Course Title	Completion Date	Credit Hours	Status
(FR-19) Ambulatory Surgery Centers: Does Your Risk Program Work?	01/18/2010	1.00	Complete
(SA-13) Assessing Risk in Serious and Sentinel Events	01/18/2010	1.00	Complete
(SA-21) Avoiding Slippery Slopes-Practical Tips for Office Practices	01/18/2010	1.00	Complete

Course Title	Credit Hours	Status
(FR-11) Case Law, Legislative & Regulatory Case Law Update	1.50	View Course Complete Test
(SU-04) CMS Giveth, RACs Taketh Away: New Medicare Payment and Audit Initiatives	1.00	View Course Complete Test
(SA-12) CMS Grievance Requirements: Blessing or Nightmare?	1.00	View Course Complete Test Complete Evaluation
(FR-04) Common Risk Issues Associated with Medical Research and IRB's	1.00	View Course Complete Test Complete Evaluation

13) Select 'Complete Evaluation' that is underneath the status beside the test you just completed and answer the evaluation questions.

Welcome test ashrm certificate

CE Evaluation

Avoiding Slippery Slopes-Practical Tips for Office Practices

Personal Information

Are you a Nurse?

Yes

Disclosure regarding Conflict of Interest(s):

Has the provider of the activity disclosed in writing or verbally the conflict of interest or lack thereof declared by the planners and content specialists?

Yes

OBJECTIVES

I have achieved the following objectives as a result of this educational activity:

Review office practice claims data and prevalent allegations.

To a Great Extent

Discuss case scenarios and risk and liability issues posed in the office practice.

To a Great Extent

Review key areas practices need to address to reduce risk and improve patient safety.

To a Great Extent

Rate the teaching effectiveness of the learning materials.

Excellent

- 14) Once you have answered the questions on the evaluation – select the ‘Finish’ at the bottom of the page.
- 15) After completing all steps for the CE Test in question, you will notice that the course now appears in the ‘completed’ section of the transcript. Once you have completed the course, you can print your CE Certificate.
- 16) At the top of the page and click on ‘Print Education Certificates’

Learning Center Home Educational Content My Account Search Home Contact Us Log Out Welcome test ashrm certificate

My Transcript

[Print Education Certificates](#)

Course Title	Completion Date	Credit Hours	Status
(FR-19) Ambulatory Surgery Centers: Does Your Risk Program Work?	01/18/2010	1.00	Complete
(SA-13) Assessing Risk in Serious and Sentinel Events	01/18/2010	1.00	Complete
(SA-21) Avoiding Slippery Slopes-Practical Tips for Office Practices	01/18/2010	1.00	Complete

Course Title	Credit Hours	Status
(FR-11) Case Law, Legislative & Regulatory Case Law Update	1.50	View Course Complete Test
(SU-04) CMS Giveth, RACs Taketh Away: New Medicare Payment and Audit Initiatives	1.00	View Course Complete Test
(SA-12) CMS Grievance Requirements: Blessing or Nightmare?	1.00	View Course Complete Test Complete Evaluation
(FR-04) Common Risk Issues Associated with Medical Research and IRB's	1.00	View Course Complete Test Complete Evaluation

17) Select from the drop down the activity you'd like to print.

Activity:

Please select an activity to view and print your Statement of Credit.

18) Then choose the CE Statement you'd like to print – NOTE: all completed courses will be listed to allow for multiple reprints of the same CE Certificate.

Activity:
 CE Statement:

Please select a CE Statement to view and print.

19) Once the CE Statement has been selected the image will appear on the screen and you can select to print it to a printer or save to your computer.

Activity:
 CE Statement:

Page through the document contents and see links and form fields using the Hand tool

American Society for Healthcare Risk Management

One North Franklin
Chicago, Illinois 60606

test ashrm certificate

has successfully completed
Avoiding Slippery Slopes-Practical Tips for Office Practices
 for 1 contact hours

The American Society for Healthcare Risk Management is an approved provider of continuing medical education for

NOTE: to print this landscape on certificate paper/regular paper – you will need to adjust the settings on your printer.

NOTE: If you require an INA NURSING CNE Certificate and an ASHRM CE Certificate, please print one version, then return to 'MY Account' Page - click on Personal Details, scroll to the bottom and change 'Are you a Nurse' from Yes to No, then return to print the second version of the CE Certificate for this session.